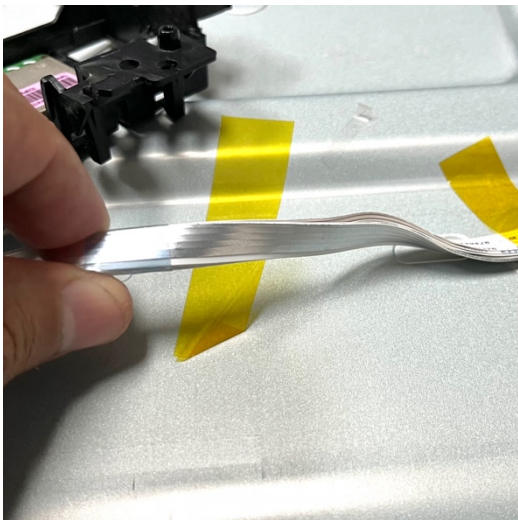


## PLEASE MAKE SURE TO FOLLOW THE INDICATIONS BELOW

After installing the new Wi-Fi module:

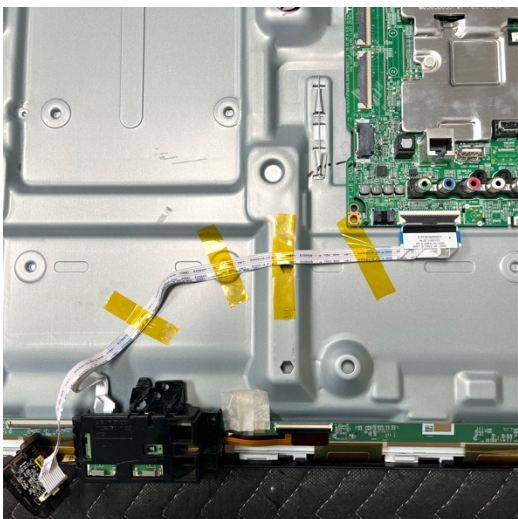
1. **Attach the flat cable securely** to the metal chassis using tape.
  - We recommend using four pieces of high-heat professional tape.
  - Regular clear tape can also work.
  - You can use extra tape to make sure the cable stays in place.
2. **Position the cable correctly:**
  - The foil side of the cable should face the metal chassis (see Picture #1).
  - The side with printed numbers should face up (see Picture #2).
3. **Check your work:**
  - Picture #3 shows an example of a correctly installed cable.
  - Your setup might look a bit different depending on your TV model.



Picture 1



Picture 2



Picture 3