

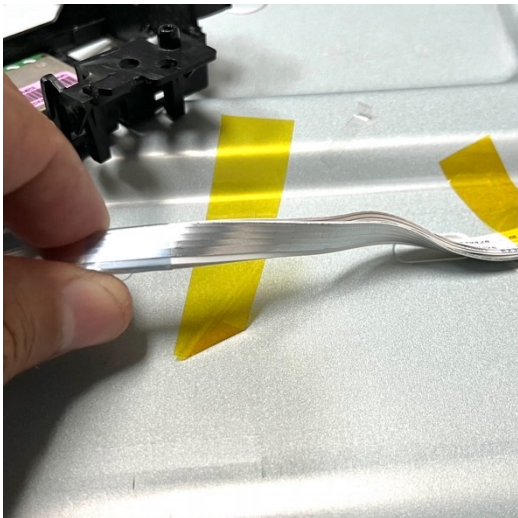
## PLEASE MAKE SURE TO FOLLOW INDICATIONS BELOW

After installing the new Wi-Fi module, make sure to securely attach the flat cable to the metal chassis using tape. We recommend using four pieces of high-heat professional tape, but regular clear tape can work as well. You may want to add a few extra pieces to ensure the cable stays in place more securely.

Remember to position the side of the cable with foil facing the metal chassis. Check [picture #1](#) for a visual guide.

In [picture #2](#), you'll see the side of the cable that should be facing up. This side typically has numbers printed on it.

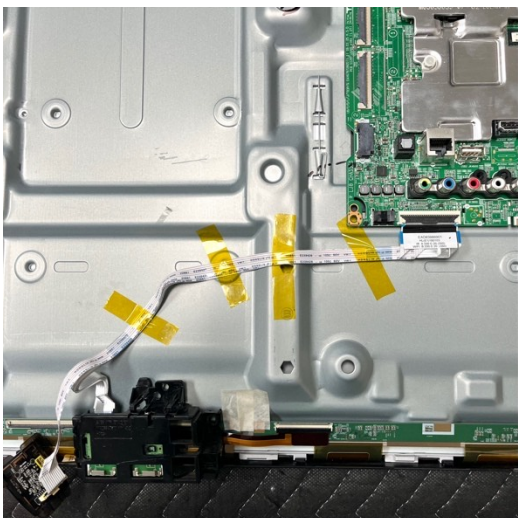
[Picture #3](#) provides an example of what it should look like once properly installed. Keep in mind, this is just a reference and might look slightly different depending on your TV model.



Picture 1



Picture 2



Picture 3